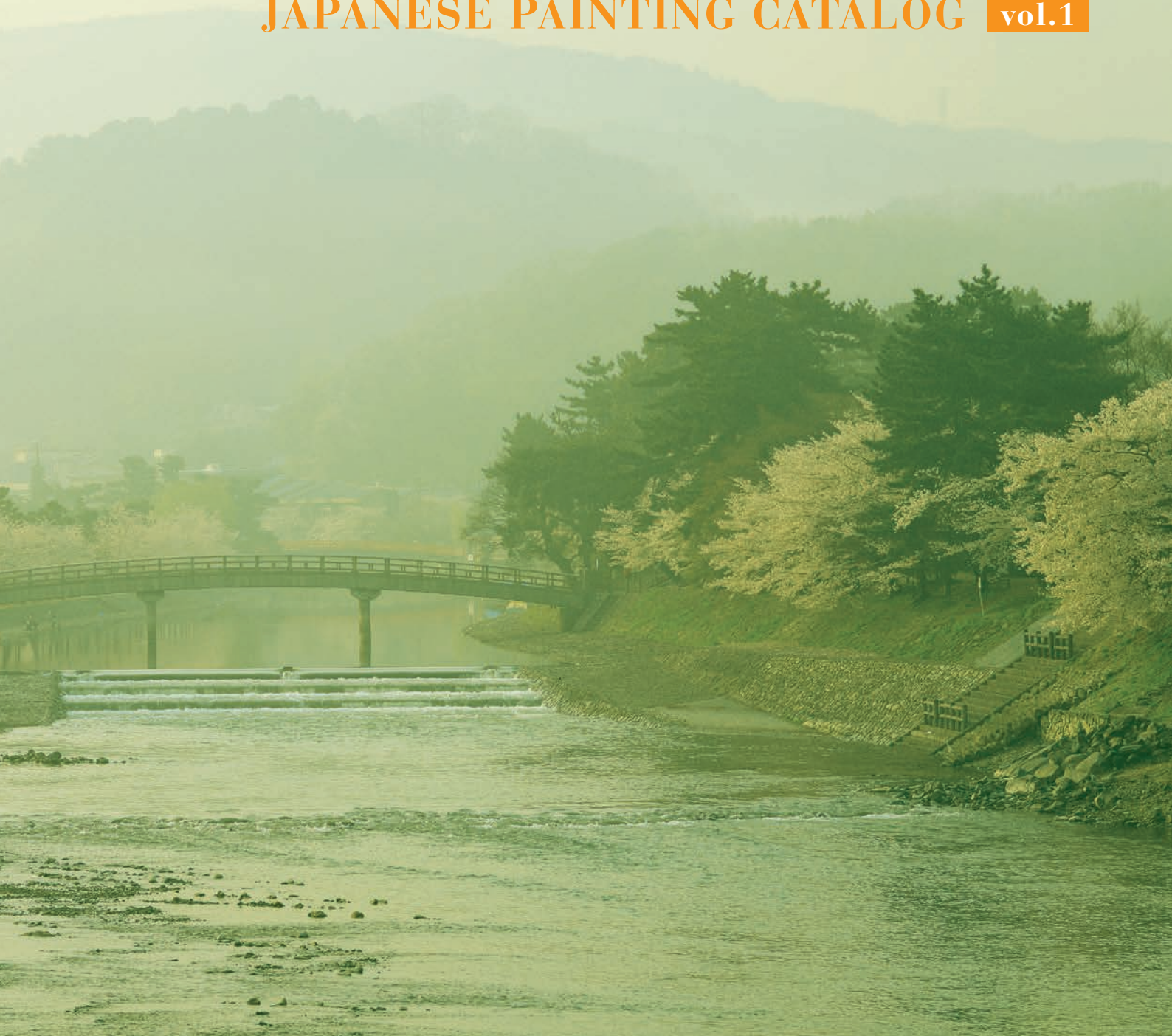


鳳凰



JAPANESE PAINTING CATALOG **vol.1**





TENNEN IWAENOGU / SHIN IWAENOGU / KYOJO IWAENOGU
 (natural mineral pigment) / (Synthetic pigment) / (Lead free pigment)



the pigments used in Nihonga mainly consist of "TENNEN IWAENOGU" derived from powdered natural minerals, "SHIN IWAENOGU" manufactured from artificial powdered stones and the newly developed KYOJOIWAENOGU. By separating the coarse and fine powdered particles of natural minerals, even the same color is capable of expressing various shades. Due to this, our pigment range consists of almost 1,400 colors.

TENNEN IWAENOGU (natural mineral pigment) Price List▶P3~5

TENNEN IWAENOGU is created by handpicking high quality minerals and precious stones born from nature, pulverizing and levigating these to extract their natural beauty, then sorting them into particles.



GUNJO

GUNJO is a traditional Nihonga pigment made from Azurite. The beauty of its deep, intense blue color has seen it used as a precious premium pigment from antiquity.



MATSUBA ROKUSYO

The ingredient of MATSUBA ROKUSYO is Malachite, a mineral in the monoclinic crystal system. The green bands which form on malachite resemble the feathers of a peacock, hence it is also known as Peacock Stone.



5 6 7 8 9



5 6 7 8 9



10 11 12 13 14(BYAKU)



10 11 12 13 14(BYAKU)

ZOGEIRO
 IWAODO
 KICHA
 TORENSEKIMATSU
 SAKURANEZUMI
 IWASHINSHA
 SANGOMATSU(dark)
 SANGOMATSU(light)
 MENOMATSU
 IWASHUDO

KOGYOKUMATSU
 KUCHIHAIRO
 IWAGUNJO
 IWAGUNROKU
 KAIRYOKUSEKIMATSU
 SHIUNMATSU
 MATSUBAROKUSHO
 YAKIROKUSHO(light)
 YAKIROKUSHO(dark)
 YANAGIHAURA

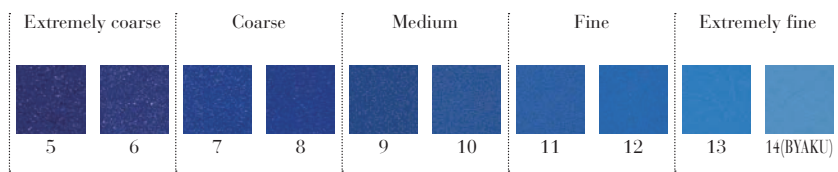
HAKUSUMATSU
 MIDORIMENO
 HEKIGYOKU
 KIHEKIGYOKU
 AKAKUCHIAZUKICHA
 CHABYAKU
 IWAHADA
 IWAKINCHA
 IWATAISHA
 AKACHA

KINCHA(light)
 IWAKOGECHA
 CHOJICHA
 IWAKURO
 AIZUMIHO
 SUGIHAIRO
 KUROKUCHINEZUMI
 DENKISEKIMATSU
 IWANEZUMI
 KOIKUCHINEZUMI

KOKUYOSEKIMATSU
 SUNEZUMI
 SUISHOMATSU
 IWAGOFUN
 JYUNHOKAIMATSU
 MORIAGE



Our IWAENOGU is divided into TENNEN IWAENOGU, SHIN IWAENOGU and KYOJO IWAENOGU.

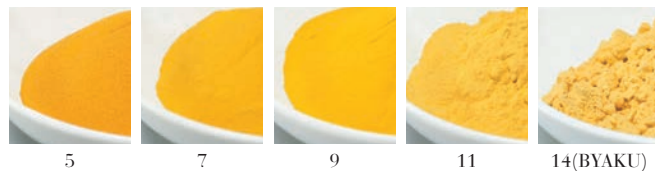


All types are made from crushing a solid block into a powder, sorting this powder into 10 grades depending on particle size then classifying into the standardization numbers shown left. They are different color and different texture by particle size of the color. You decide on color and particle grade when you purchase.

SHIN IWAENOGU (Synthetic IWAENOGU) [Price List▶P1~3](#)

SHIN IWAENOGU was developed by our company in order to supplement the limited color hues of TENNEN IWAENOGU. A metal oxide with good color forming ability is dissolved into a glaze constitute. The base ingredient is heated and melted in an electric furnace at 800 to 1000 degree Celsius to create the block which forms the basis of the pigment. And then we make it with the same method of TENNEN IWAENOGU. Now SHIN IWAENOGU is the primary product in the IWAENOGU field.

YAMABUKI



- USUKUCHIIWAKI
- IWAKI
- AKAKUCHIIWAKI
- YAMABUKI
- KOYIYAMABUKI
- KIKUCHIODO
- ODO
- KIKABA
- IWAKABA
- BENIKABA
- IWADAIDAI
- KIBENI
- IWABENI
- IWAHI
- IWAACA
- BENISHINSHA
- IWASHIKO
- SHINSHA
- IWAMOMO
- SAKURAIRO
- USUKUCHIMURASAKI
- FUJIMURASAKI
- IWAMURASAKI
- IWAKON
- KUROGUNJO
- AIGUNJO
- MURASAKIGUNJO
- KONJO

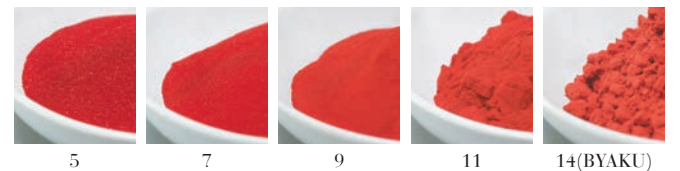
- BIGUNJO
- GUNJO
- USUKUCHIGUNJO
- KODAIGUNJO
- ASAGIGUNJO
- MIZUASAGI
- USUMIZUIRO
- SEIJIRO
- MIZUGUNROKU
- KOIGUNROKU
- GUNROKU
- KUROGUNROKU
- TSUBAKIROKUSHO
- AOKUCHIROKUSHO

- MATSUBAROKUSHO
- ROKUSHO
- BIROKUSHO
- URAHAROKUSHO
- KIKUCHIURAHHA
- HIWAIRO
- WAKABA
- KIROKUSHO
- BISOROKU
- SOROKU
- AOKUCHISOROKU
- UGUISU
- UGUISUROKUSHO
- SABIROKUSHO

- KODAIROKUSHO
- YAKIROKUSHO
- KUROROKUSHO
- KAREHA
- UCUISUCHAROKU
- KICHAROKU
- KINCHA
- KABACHA
- IWATAISHA
- AKAKUCHITAISHA
- IWACHA
- SABICHA
- KURICHA
- AZUKICHA

- KOGECHA
- KUROCHA
- IWAKURO
- JUNKURO
- KOIKUCHINEZUMI
- MURASAKINEZUMI
- IWANEZUMI(2)
- IWANEZUMI
- RIKYUNEZUMI
- GINNEZUMI
- IWASHIRO

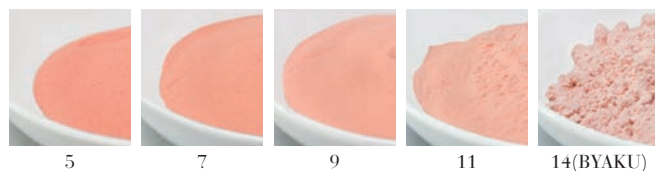
IWAHI



KYOJO IWAENOGU [Price List▶P5](#)

KYOJO IWAENOGU is made with the same method of SHIN IWAENOGU. It is a new form of SHIN IWAENOGU developed as a robust IWAENOGU which does not change color even when exposed to environmental-polluting gases and is also highly durable against ultraviolet rays.

SANGO

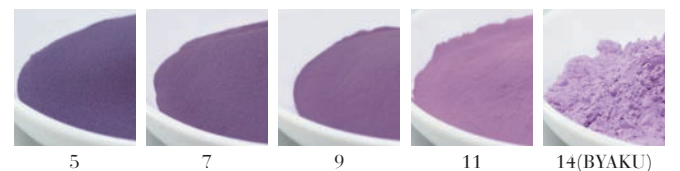


- KYOJO KANARIAKI
- KYOJO SANGO
- KYOJO FUJIBAKAMA

- KYOJO BENIFUJIMURASAKI
- KYOJO KIKYOMURASAKI
- KYOJO MURASAKI

- KYOJO SHIKINMATSU
- KYOJO GOSU
- KYOJO GUNJO

MURASAKI



- KYOJO TORUKOAO
- KYOJO MATSUBAROKUSHO
- KYOJO ROKUSHO

- KYOJO KIKUCHIROKUSHO

IWAENOGU SHINIWAENOGU 81 colors, TENNENIWAENOGU 46 colors, KYOJO 13 colors (color increase)

■ 20g bottle



■ 100g bag



■ 500g bag



12 color set A [Price List▶P11](#)

AKAKUCHIHONSHU	IWADAIDAI	IWAKI	ODO	IWATAISHA
UGUISU	BIROKUSHO	BIROKUSHO※	GUNROKU	GUNJO
GUNJO※	IWAKURO			

- Each color, the content of no9 is 15g.
- ※ mark is grade no14. This content is 12g.



12 color set B [Price List▶P11](#)

IWABENI	SHINSHA	YAMABUKI	KINCHA	KURICHA
BISOROKU	URAHAROKUSHO	MIZUASAGI	ASAGIGUNJO	IWAKON
IWAMOMO	IWANEZUMI			

- Each color, the content of grade no9 is 15g



12 color set C [Price List▶P11](#)

IWAACA	IWASHIKO	KABACHA	MENOMATSU	KOGECHA
WAKABA	KUROROKUSHO	KICHAROKU	MIZUGUNROKU	BIGUNJO
USUKUCHIMURASAKI		IWAGOFUN		

- Each color, the content of grade no9 is 15g.



12 color set D (TENNEN) [Price List▶P11](#)

ZOGEIRO	SANGOMATSU(dark)	IWASHINSHA	IWASHUDO	IWAGUNJO
SHIUNMATSU	MATSUBAROKUSHO	MIDORIMENO	IWAKINCHA	IWATAISHA
IWAKURO	SUISHOMATSU			

- Each color, the content of grade no9 is 15g But the content of SIUNMATSU and SUISHOMATSU is 12g.



24 color set [Price List▶P11](#)

AKAKUCHIHONSHU	IWABENI : No.12
IWADAIDAI : No.9・No.12	IWAKI : No.9・No.12
ODO : No.9・No.12	IWATAISHA : No.9・No.12
UGUISU : No.9・No.12	BIROKUSHO : No.9・No.12・No.14
URAHAROKUSHO : No.12	GUNROKU : No.9・No.12
GUNJO : No.9・No.12・No.14	MIZUASAGI : No.12
IWAKURO : No.9・No.12	

- Each color, the content of grade no9 is 15g. But the content of no14 is 12g.



48 color set ASUKA Price List▶P11

IWAAKA	IWADAIDAI	IWAKI
ODO	IWATAISHA	UGUISU
KUROROKUSHO	BIROKUSHO	GUNROKU
GUNJO	IWANEZUMI	IWAKURO

● Each color, the content of grade no7, no9, no11 and no13 is 10g.



48 color set HEIAN Price List▶P11

IWAAKA※(AKAKUCHIHONSHU)	IWADAIDAI※(KIKUCHIHONSHU)
IWAKI	ODO
UGUISU	KUROROKUSHO
GUNROKU	GUNJO
IWAKURO	BIROKUSHO
	IWANEZUMI

● Each color, the content of grade no8, no10, no12 and no14 is 10g.

● ※ mark content is () product instead of no14.



48 color set MOMOYAMA Price List▶P11

IWABENI	IWAMOMO	YAMABUKI	KINCHA
AKAKUCHITAISHA	KICHAROKU	WAKABA	URAHAROKUSHO
YAKIROKUSHO	MIZUASAGI	BIGUNJO	USUKUCHIMURASAKI
SHINSHA	IWAKABA	KABACHA	KOGECHA
AZUKICHA	UCUISUCHAROKU	BISOROKU	MATSUBAROKUSHO
MIZUGUNROKU	ASAGIGUNJO	IWAKON	KOIKUCHINEZUMI

● Each color, the content of grade no8 and no12 is 10g.



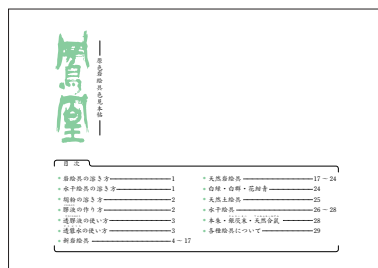
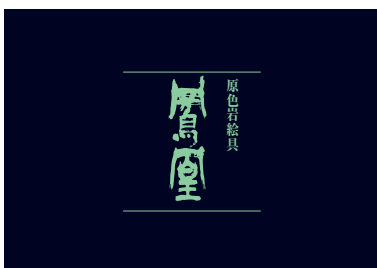
48 color set TENPYO (TENNEN) Price List▶P11

IWAKINCHA	IWAODO	IWASHINSHA	IWATAISHA
AKAKUCHIAZUKICHA	SANGOMATSU(dark)	IWAGUNJO	IWAGUNROKU
MATSUBAROKUSHO	MIDORIMENO	HEKIGYOKU	HAKUSUIMATSU
YANAGIHAURA	CHOJICHA	CHABYAKU	IWASHUDO
IWAHADA	ZOGEIRO	SUISHOMATSU	SHIUNMATSU
KOKUYOSEKIMATSU	KUCHIHAIRO	IWAKOGECHA	IWAKURO

● Each color, the content of grade no8 and no12 is 10g

the content of IWAGUNJO and MATSUBAROKUSYO is no14 instead of no12.

Color chart Price List▶P13



Drawing Set for Beginners

A lot of artists said "Pigments are the charm of NIHONGA."
 NIHONGA means Japanese painting.
 IWAENOGU and GOFUN are used as material of NIHONGA since ancient times.
 They have reacted us positive influence or creativity.
 You are having fun to paint fresh and brilliant four seasons of Japan with a lot of pigments.
 This set is prepared the instruction. You make great work when you color following it.
 Let's start to make Japanese-painting.

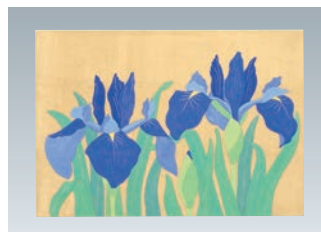


Drawing Set For Beginners(Starter kit SM-size) [Price List▶P12](#)

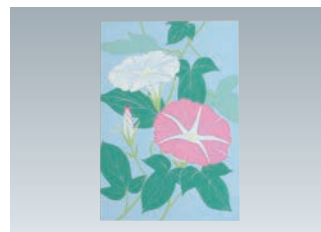
- Set content
 pigments(10color)/design(2type)/trace paper/4 brushes/
 4 plates/sumi ink/MASHI BOARD SM size 2pcs/
 glue solution/instruction



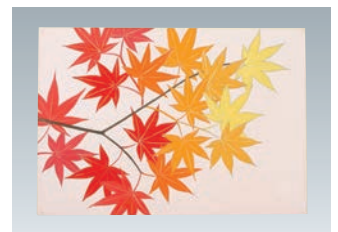
Starter Kit Cherry



Starter Kit Iris



Starter Kit MorningGlory



Starter Kit Maple

Drawing Set For Beginners(Beginners kit PostCard-size) [Price List▶P12](#)

- Set content
 pigments(9colors)/design(2type)/
 trace paper/2 brushes/3 plates/sumi ink/
 MASHI BOARD postcard size 2pcs/
 glue solution/instruction

- Postcardsize
 Picture Frame
[Price List▶P13](#)



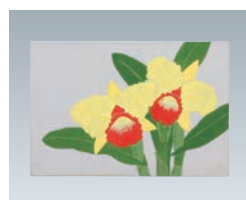
※Sold separately



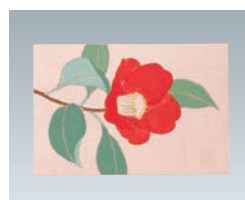
Beginners kit Cherry



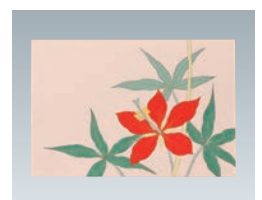
Beginners kit Maple



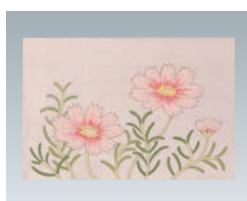
Beginners kit Orchid



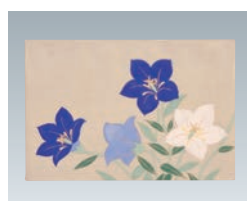
Beginners kit Camellia



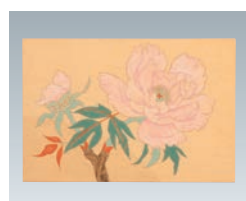
Beginners kit Hollyhock



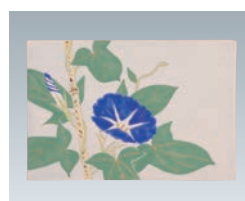
Beginners kit Cosmos



Beginners kit Bellflower



Beginners kit Peony



Beginners kit MorningGlory



Beginners kit Iris

SUIHI GOFUN · GOFUN mixed with glue · Paste GOFUN with glue

About SUIHI GOFUN



SUIHI GOFUN is the color of Japanese traditional white. Itabo oyster shell is the base ingredient of GOFUN, which must be exposed to the elements for a period of between 10 and 15 years. After that, grind with a stone mill in wet method. At the same time crushed powder is levigated and classifying, the substance is poured thinly onto boards and left out to dry under the sun, then knocked off the wooden boards to remove. this GOFUN is flake type. And the other, we have powder type of GOFUN.

SUIHI GOFUN Price List▶P7

GOFUN is the traditional white pigment from Japan ancient times. The white is warm and important to painting Japanese painting. It can be used as white pigment and it is possible to adjust color tone by mixed with other colors.

■ GOFUN for craft man use



SHIRAYUKI/YUKI/MATSU/TAKE
25kg/2kg12pcs/600g40pcs

- picture is YUKI 600g40pcs
- You choice flake or powder. But there is only powder without SHIRAYUKI 25kg.

■ KINPO-JIRUSHI



- 500g box/300g box/150g box
you choice flake or powder

■ HAKUJU-JIRUSHI



- 500g box/300g box/150g box
you choice flake or powder

■ SHIRAYUKI-JIRUSHI



- 500g box/300g box/150g box
you choice flake or powder

Grade differs from part of Itabo oyster shell.
there is rough particle GOFUN which are MORIAGE GOFUN 500g box/ 150g box.

GOFUN mixed with glue Price List▶P7

This GOFUN doesn't need to add glue. It's already mixed with glue. you can use this GOFUN only mixed with warm water. It is suitable for foundation and it is firmly established and it is less cracked.

■ HAKUREIJIRUSI



- 500g box/300g box/150g box

Paste GOFUN with glue Price List▶P7

This is tube type GOFUN. The GOFUN is made from high quality Itabo oyster shell and they mixed with NIKAWA glue. Glue is NIKAWA. So it is suitable for Japan style painting.

■ MIYAKONOUYUKI



- 20ml tube/40ml tube

SUIHI ENOGU • TSUCHI-ENOGU • GANSAI

SUIHI ENOGU (71 colors) Price List▶P7・8

Particles of SUIHI ENOGU is fine and the number of SUIHI ENOGU colors are lot.
The characteristics about it is easy to paint and mixing colors freely.
we recommend for beginners.

■ Bottle 20cc



■ Bottle 70cc



■ Box 500g



※Depend on the color, it may contain 250g.

About SUIHI ENOGU



SUIHI ENOGU is refined in water (sui) and then dried (hi), which is where its name "SUIHI" derives from. A robust pigment with high light resistance is selected, GOFUN is added then, once put through the suihi refining process, laid out on a cedar board in a thin flat shape to dry naturally. SUIHI ENOGU is extremely fine and is known for its excellent color forming characteristic.



12 color set (20cc bottle) ★

KI ★★
YAMABUKI ★
KIHADA
USUCHA
ODO ★★
KOIKUCHIODO
KUSAODO
HADAIRO(1)
HADAIRO(2) ★

SANGOIRO
KABA ★
MOMOIRO ★
KOBAI
AKAKUCHISHU
SHU ★★
DAIDAI
BENI ★★
KODAIISHU

ENJI
BOTAN
HIAKA
HATOBAMURASAKI
AKAMURASAKI
MURASAKI ★★
AOMURASAKI
HANAAI ★★
KONJO

AI
KUROGUNJO
MURASAKIGUNJO
BIGUNJO
GUNJO ★★
SABIGUNJO
KOIGUNJO
USUGUNJO
BYAKUGUNJO

BYAKUGUN ★★
BLAO ★
MIZUASAGI
GUNROKU ★
BYAKUGUNROKU
AOROKUSHO
HANAROKUSHO
ROKUSHO ★★
AOBYAKUROKU

BYAKUROKU ★★
KIBYAKUROKU
USUBYAKUROKU
SABIBYAKUROKU
YAKIROKUSHO
KUROROKUSHO
AOKUSA ★
SOROKU
KIKUSA ★

HIWAIRO
WAKABA
KIROKUSHO ★
UGUISU
KODAIROKUSHO
SABIGUNROKU
KINGCHA ★
OGONCHA
TAISHA ★★

SHUDO
AZUKICHA
KOGECHE ★
KUROCHA
KURICHA
KURO ★★
NEZUMI ★
GINNEZUMI



24 color set (20cc bottle) ★

TSUCHI-ENOGU (50 colors) Price List▶P9

TSUCHI-ENOGU made from good quality natural soil in Japan and around the world.

■ Box 500g



※ There is also a 150g box.

TONKO-ODO(Whity)
TONKO-ODO
ODO from France
TAISHA from France
KINCHA from France
KINODO from Italy
KINODO from France
ODO no.2 from France
ODO no.3 from France
KINCHA from UK
KINCHA no.2 from UK
OGONCHA from Italy
OGONCHA from Germany
KAREHA from Italy
KAREHA from Germany
KUCHIHA from Germany
KUCHIHA from Greece

KUCHIHA no.2 from Germany
SHUDO from France
SHUDO from Italy
SHUDO no.2 from France
TAISHA from Italy
TAISHA no.2 from Italy
KURICHA from Italy
KURICHA from UK
KURICHA from Greece
KOGECHE from Germany
KOGECHE from Greece
KOGECHE no.2 from Greece
GINODO from Germany
RYOKUDO from Italy
RYOKUDO from Germany
UGUISUCHA from Greece
USUZUMI ODO

KANSHUUI ODO
JURAKU ODO
INARIODO
TAWARA HAKUDO
RYOKUDO from Bohemia
ODO from Morocco
TAISHA from Morocco
KOGECHE from Morocco
BENGARA from Italy
BENGARA from Germany
GINNEZUMI from Germany
RYOKUDO from Russia
INARIODO(black)
INARIODO(white)
INARIODO(light)
INARIODO(red)

About TSUCHI-ENOGU



Tennen TSUCHI-ENOGU is a pigment which has been used in both the East and West from antiquity. High quality natural earth gathered in Japan and countries across the world is put through the suihi refining process then laid out on cedar board in a thin flat shape to dry naturally. Tennen TSUCHI-ENOGU is extremely fine and is known for its natural, soothing textures.

GANSAI Price List▶P11

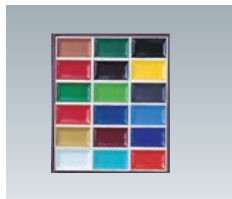
GANSAI pigment is possible that you can use easily with water and brushes. It is the pigment of Japanese style watercolor. you can see rough sketch after painting. It is easy to mix colors. It is suitable for sketch and an illustrated postcard.



12 color set

ENJI
AOKUSA
ROKUSHO
KI
MURASAKI
AI

BYAKUROKU
ODO
TAISHA
GUNJO
SYU
GOFUN



18 color set

TAISHA
KURO
AI
AOKUSA
MURASAKI
ASAGI
ODO
GUNJO
BYAKUROKU

ROKUSHO
KOBAI
KI
WAKABA
BENI
BYAKUGUN
ENJI
GOFUN
SYU



24 color set

ENJI
BENI
GUNROKU
ODO
TAISHA
UGUISUCHA
KI
KURO
UGUISU
SYU
GOFUN
WAKABA

BYAKUROKU
MURASAKI
KOBAI
ROKUSHO
AOKUSA
SINSHA
GUNJO
ASAGI
SOROKU
AI
BYAKUGUN
KURICHA



36 color set

AOBYAKUROKU
BYAKUGUNROKU
KABA
MOMOIRO
ENJI
MURASAKI
ODO
AOKUSA
KI
ASAGI
SYU
BYAKUGUN

NEZUMI
AZUKICHA
HATOBAMURASAKI
YAMABUKI
BYAKUROKU
GUNROKU
ROKUSHO
UGUISUCHA
GUNJO
UGUISU
AI
WAKABA

SANGOIRO
BIGUNJO
KIROKUSHO
HADAIRO
BENI
KOBAI
TAISHA
SINSHA
KURO
SOROKU
GOFUN
KURICHA

※GANSAI is also available in a single color.

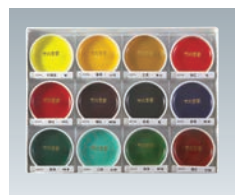
BOUENOGU (12 colors) Price List▶P11



12 color set Price List▶P12

ENJI	SINSHA	HONAI
CUNJO	ROKUSHO	SOROKU
YOKO	SHU	TAISHA
ODO	KI	GOFUN

TEPPACHI (48 colors) Price List▶P10



12 color set ★ Price List▶P12

ENJI ★	BYAKUGUN	YOKO ★
BYAKUROKU ★	GUNROKU	GINNEZUMI
AOKUSA	UGUISUCHA	KOGECHA
ODO ★	SINSHA	KIBYAKUROKU
ROKUSHO ★	UGUISUCHA	KINCHA
TAISHA ★	SOROKU ★	KIKUSA
KI ★	KURICHA	KODAIROKUSHO
CUNJO ★	BIGUNJO	Gold Pearl
MURASAKI	AOBYAKUROKU	Silver Pearl
SHU ★	HATOBAMURASAKI	Platinum Pearl
AI ★	YAMABUKI ★	SABIGUNJO
GOFUN	HADAIRO	KONJO
KOBAI	SANNGOIRO	TOROKU
WAKABA	MOMOIRO	SHUHYO
BENI	KABA	SINKU
ASAGI	AZUKICHA	SHUSA

HONSHU Price List▶P6

(3 colors / KIKUCHI • AKAKUCHI • KAMAKURASHU)

■ Bottle 20cc



■ 100gBag



■ 500gPaperBag



Pearl • Mica Price List▶P11

■ Pearl Bottle 20cc



4 colors
(Gold • Silver • Platinum • Redish Brown)

■ Pearl Bottle 70cc



4 colors
(Gold • Silver • Platinum • Redish Brown)

■ Pearl 250gBox



4 colors
(Gold • Silver • Platinum • Redish Brown)

■ Mica Bottle 20cc



5 types
(Very Rough • Rough • Rough Middle • Middle • Fine)

■ Mica 250gBag



5 types
(Very Rough • Rough • Rough Middle • Middle • Fine)

GINKAIMATSU (6 colors) Price List▶P6

It is light grayish pigments. It based on finest TENNEN IWAENOGU and mixed with pigment.

■ 500gPaperBag



■ 100gBag • Bottle20g



TENNEN AINEZUMI Price List▶P6

(6 colors / SHIROCHAMATSU • UMENEZUMIMATSU • HEKIKAIMATSU • NIBIROMATSU • YANAGINEZUMIMATSU • KARACHAMATSU)

It is light grayish pigments. It is mixed with several types TENNEN IWAENOGU.

■ 500gPaperBag



■ 100gBag • Bottle20g



BYAKUROKU Price List▶P6

(4 colors / YAKIBYAKUROKU (light) • YAKIBYAKUROKU (middle) • YAKIBYAKUROKU (dark) • YAKIBYAKUROKU (black))

■ 500gPaperBag



■ 100gBag



BYAKUGUN Price List▶P6

(3 colors / ASAGIBYAKUGUN (light) • ASAGIBYAKUGUN • MIZUIROBYAKUGUN)

■ 500gPaperBag



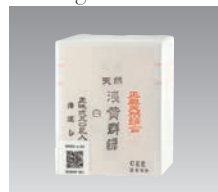
■ 100gBag



● MIZUIROBYAKUGUN is in 250g paper bag.

ASAGIGUNROKU Price List▶P6

■ 250gBox



Other goods • Other • Washi Paper

Other goods

Price List▶P6

■ HANAKONJO (small)



150g • 500g bag

※ We have some grain size, rough, middle, fine, very fine

■ Litharge (Yellowish Brown)



100g bag

※ There is also a 500g paper bag.

■ Special Minium



100g bag

※ There is also a 500g paper bag.

■ Minium



100g bag

※ There is also a 500g paper bag.

■ Lead (White)



100g bag

※ There is also a 500g paper bag.

■ Titanium White



100g bag

※ There is also a 500g paper bag.

■ Cochineal



20cc bottle

※ There is also a 100g Box.

■ Gamboge



20cc bottle

※ There is also a 100g Box.

■ Indigo



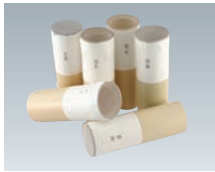
20cc bottle

※ There is also a 100g Box.

Other

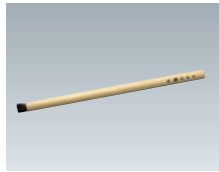
Price List▶P13

■ SUNAGOZUTSU



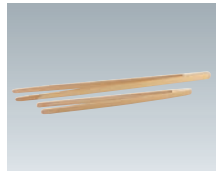
Very Rough • Rough • Middle • Fine • Very Fine • for Gold Powder

■ Brush for SUNAGOZUTSU



Middle

■ HAKUHASHI



20cm • 27cm

■ CHIKUTOU



Middle

■ SHIKAKAWADAI



■ Brush Cleaning Round Pot



12cm • 15cm

■ Brush Cleaning Rectangular Pot



12cm • 15cm

■ Pallet Plate (Ceramic)



8.5cm • 10.5cm • 13cm • 15cm • 18cm

■ Plum motif Palette (Ceramic)



8.5cm • 12cm • 13.5cm • 15cm • 18cm

■ Pestle and Mortar



6cm • 9cm • 12cm • 15cm • 18cm

■ Glue pot with grip



9cm • 12cm

■ Plum motif Palette (Plastic)



■ Pallet Plate (Plastic)



8cm 5 sheets

■ Spoon for pigment



18cm

■ Spoon for water or glue



■ Drawing SUMI Ink



180ml

■ Postcardsize PictureFrame (green • beige)



Washi Paper

Price List▶P13

■ KUMOHADAMASHI (not sizing)

■ SHIROMASHI (not sizing) No. II • No. III

■ TORINOKO No. II • No. III

■ MASHI BOARD PAINTED GOFUN (postcard size • SM • F4)

■ Trace Paper (postcard size • SM)



Leaf・Rock Set

Leaf Price List▶P14

■ Pure Gold Leaf



10 piece • 100 piece

■ Pure Gold Leaf



10 piece • 100 piece

■ Platinum Leaf



10 piece • 100 piece

■ Coper Leaf



10 piece • 100 piece

■ Silver Alloy Leaf



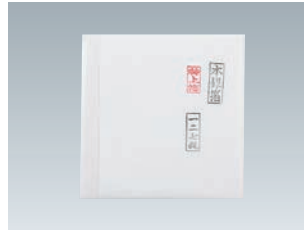
10 piece • 100 piece

■ Silver Alloy Leaf(Black)



10 piece • 100 piece

■ Silver Leaf

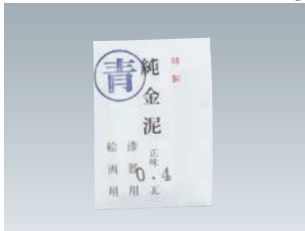


10 piece • 50 piece • 100 piece

■ Pure Gold Powder 0.4g



■ Pure Bluish Gold Powder 0.4g



■ Pure Silver Powder 2.0g



■ AKASHICAMI Paper for remove the leaf



50 piece

■ Reddish immitation gold leaf



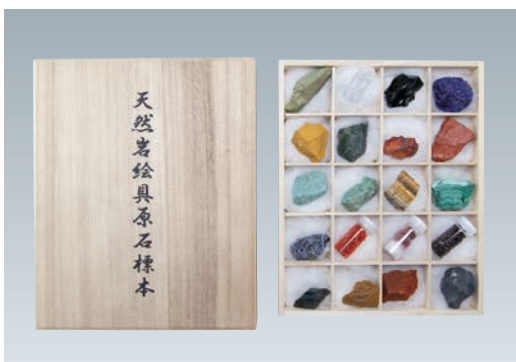
10 piece • 50 piece • 100 piece

■ Bluish immitation gold leaf



10 piece • 50 piece • 100 piece

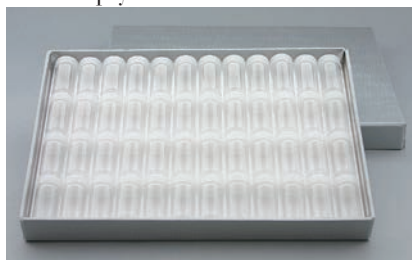
Rock Set Price List▶P11



Empty Bottle • Acrylic case

Empty Bottle Price List▶P14

■ 48 empty bottle and box



10cc

■ 24 empty bottle and box



20cc

■ 12 empty bottle and box



20cc

■ 12 empty bottle and box



15cc

■ Jar, wide mouthed bottle



120cc • 180cc • 250cc • 500cc

■ Mayonnaise Bottle



70cc • 140cc • 225cc • 450cc

The size chart of glass bottle

Sample Bottle

- 10cc 21mm × 45mm
- 15cc 25mm × 50mm
- 20cc 25mm × 55mm

Mayonnaise Bottle

- 70cc 46mm × 84mm
- 140cc 55mm × 100mm
- 225cc 63mm × 114mm
- 450cc 81mm × 134mm

Jar, wide mouthed bottle

- 120cc 57mm × 115mm
- 180cc 62mm × 130mm
- 250cc 70mm × 145mm
- 500cc 85mm × 165mm

■ Sample Bottle



10cc • 15cc • 20cc

Acrylic case

■ For 20cc bottle



■ For GANSAI



■ For TEPPACHI



Glue

Glue Price List▶P12

■ Cow Hide Glue



100g



250g



500g



1.0kg

※There is also 5kg bag and 20kg bag.

■ Rabbit Skin Glue



100g



250g



500g



1.0kg

※There is also 20kg bag.

■ Hide Glue Solution



250ml・500ml

■ Sizing Solution



250ml・500ml

■ JINNORI (Glue made from Starch)



100g

※There is also 500g bag.

■ SHOUFUNORI (Glue made from Starch)



100gBag

※There is also 500g bag.

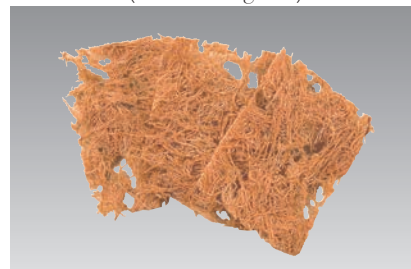
■ KIMYOUBAN (Alum)



100gBag

※There is also 500g bag.

■ FUNORI(Dried Sea grass)



100gBag・500gBag

How to use Hide Glue Solution and Sizing Solution. How to make NIKAWA glue solution. How to use MIYAKONOYUKI tube

Hide Glue Solution • glue solution

How to use Hide Glue Solution



1 Transfer Hide Glue Solution to glue-pod.



2 Add twice or three times water.



3 Mixed well and use it.

How to use Sizing Solution



1 Transfer Sizing Solution to mixing bowl.



2 Applying it to the brush enough.



3 Paper is placed on a rug and move the brush in one direction
*Please use undiluted for paper and use

How to make glue solution



1 Put "Cow Hide Glue" in glue pod.



2 Pour water (Cow Hide Glue : Water =1:10) and leave overnight. Put in the refrigerator in summer.
*If you have no time, you don't need leave overnight.



3 Heat soaked glue slowly. Be careful not to burn.



4 Complete when completely melted. Stir it well. use it after warming when harden at low temperature.
*Cow Hide Glue is industrial gelatin so very pure and less contamination. Lost adhesive strength easily to add more than two times water.

How to use MIYAKO NO YUKI GOFUN



1 Squeeze MIYAKO NO YUKI out on the dish.



2 Add the between half and same amount of water.



3 Melt with a brush and dip it.



4 If you dip a lot once, it will crack. Thin coating of GOFUN and dry enough and over and over.



Please see YouTube for details.

How to use IWAENOGU/SUIHIENOGU/GOFUN How to use GOFUN with glue

How to use IWAENOGU



1 Pour glue solution a little.



2 Add glue solution and knead well with a finger. You don't add glue all at once, add several drops.



3 Add water a little and bring to a desired texture. Pigment is at the bottom. Stir them with a brush and use it.



4 Do not tilt the brush too much, and it is easier to draw if you hold it upright.

How to use SUIHIENOGU



1 Grind well with pestle and mortar. We call "KARAZURI".



2 Put pigments after KARAZURI and glue solution on a plate.



3 Knead well with finger while adding glue solution until brings paste to a smooth consistence.



4 Add water a little. Start to paint after adjust to desired density.

How to use SUIHIGOFUN



1 Grind well with pestle and mortar. We call "KARAZURI". put pigments after KARAZURI and glue solution on a plate.



2 Knead well with finger until it's as soft as an earlobe. Gather in dumplings and wedge well until GOFUN and glue mixed and blended in.



3 Leave for around 5 minutes into hot water after extend into noodles and get rid of the scum. drain hot water. And then knead well until brings paste to a smooth consistence.



4 Start to paint after adjust to desired density.

How to use HAKUREI (GOFUN with glue)



1 Put HAKUREI in a plate.



2 Add the between same and three times of hot water. And melt well.



3 Knead well with finger while adding glue solution until brings paste to a smooth consistence.



4 Start to paint after adjust to desired density.

*If add water more than three times, need to add glue solution and melt well.

How to waste liquid



1 Add 100cc water which contains 4 grams of alum into 2000cc of the waste liquid. Stir well. Start to be flocculated gradually. (PH4.3~4.8)



2 Add 100cc water which contains 2 grams of slaked lime into Waste liquid added alum solution. Stir well and a neutralizing reaction can be promoted. Starting to be condense precipitation. (PH6.8~8.0)

*Dangerous slaked lime gets into eye.



3 Leach sediments with newspaper substance of a filter. Throw away clear water and dispose of dried filtered sediments follow the instructions of the local governments.



<http://www.nakagawa-gofun.co.jp/>

ナカガワ胡粉

検索



ナカガワ胡粉絵具株式会社

本社/〒611-0021 京都府宇治市宇治乙方68

工場/〒611-0013 京都府宇治市菟道池山24 TEL(0774) 23-2266 FAX(0774) 20-4666